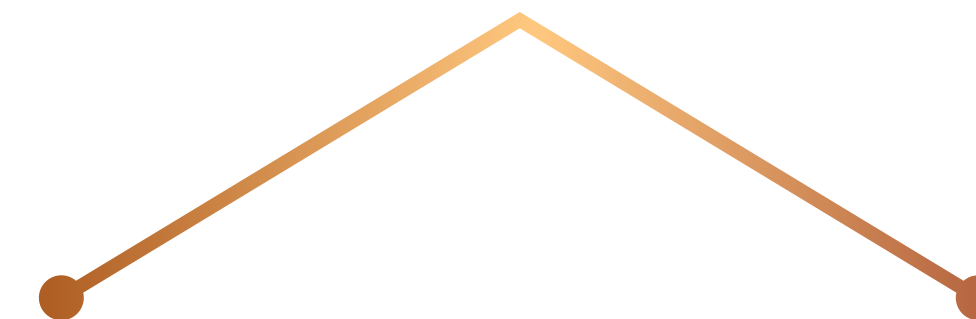




AmCham



Community Hub

Space Rental



22/F, 8-10 Duddell Street, Central, Hong Kong

www.amcham.org.hk

spaces@amcham.org.hk



Day & Night





Pantry: The Center of Gravity





About the Community Hub

Located on Duddell Street in the heart of Central, AmCham Community Hub is the first-of-its-kind meeting point for members and guests to network, build connection, and brainstorm new ideas in a collaborative environment. By integrating a flexible, hybrid work style, the space is flexible and multi-functional that can be set up for different occasions, from workshops, VR experience, art galleries, seminars, networking events, board meetings, coffee catch-ups and of course, an open workspace for the staff.

With sustainability on top of our minds, the Hub incorporates energy-saving technologies to reduce carbon footprint and to bring awareness to the wider Hong Kong community.





A flexible space with numerous possibilities...

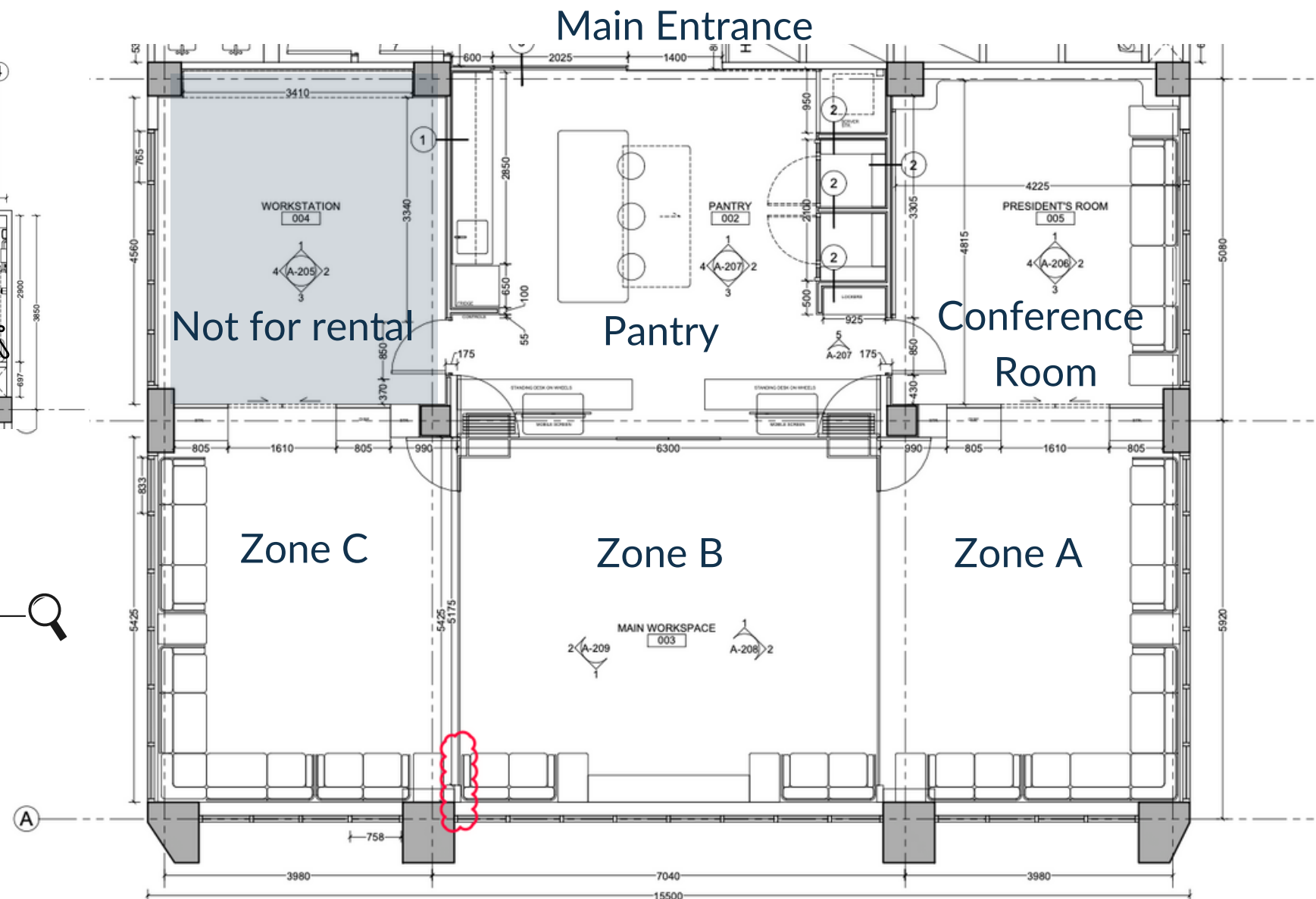
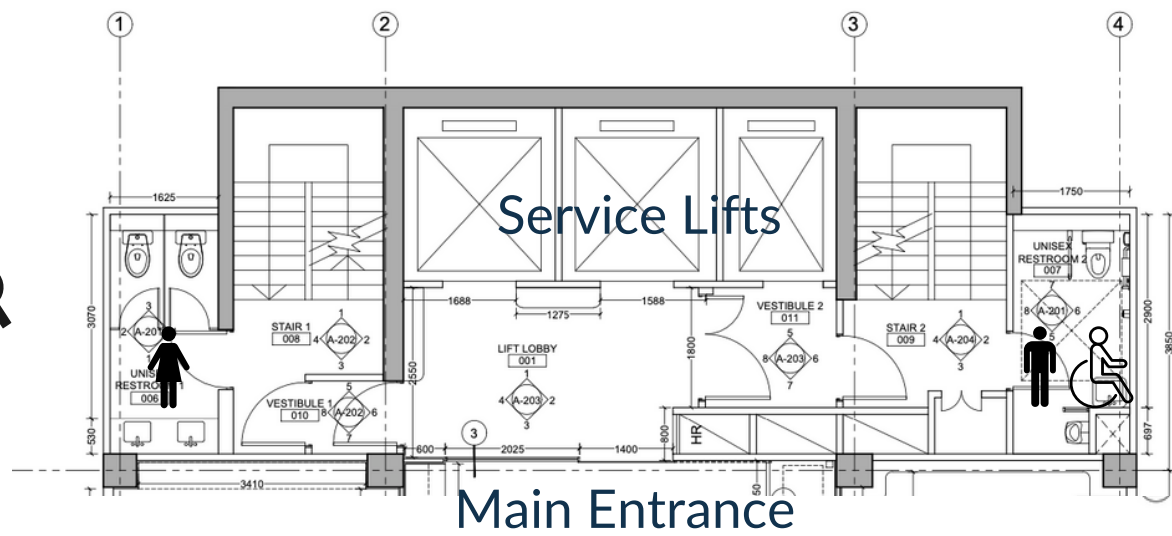
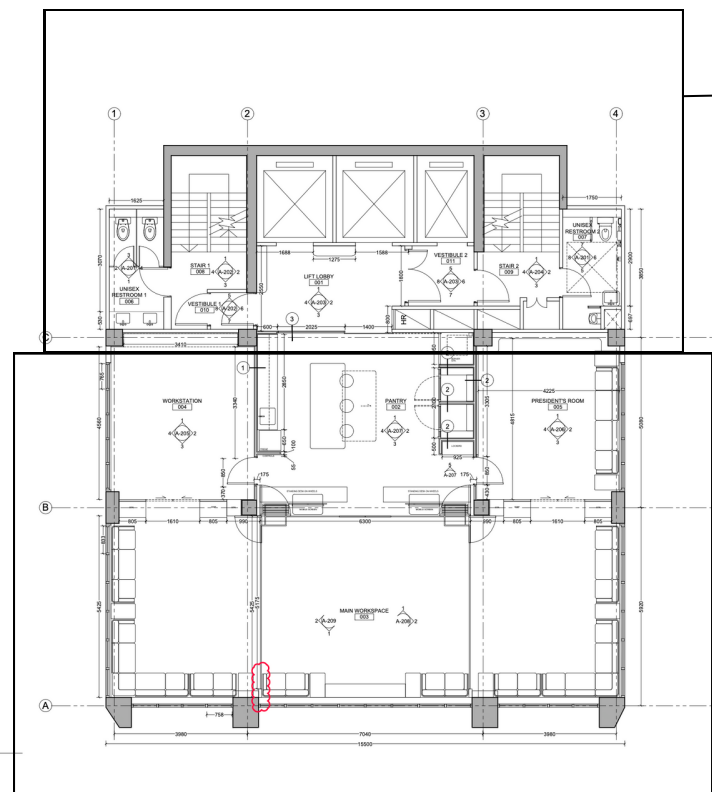
- ✓ Workshops
- ✓ Classrooms
- ✓ Annual general meetings
- ✓ Small team meetings
- ✓ Round tables
- ✓ Seminars
- ✓ Happy hours and mixers/socials
- ✓ Team offsite meetings
- ✓ Watch parties
- ✓ Brand activations
- ✓ Popups
- ✓ Art Exhibitions
- ✓ Wellness workshops

Previous Events Highlights





Floorplan & Layout



Total size: Approximately 2,250 sq. ft.

- Pantry: 344 sq. ft.
- Conference Room: 218 sq. ft.
- Lounge (Zones A, B & C): 1,301 sq. ft.



Complimentary Amenities



2X HDTV Screens



Whiteboard with markers



Phone booths for confidential calls



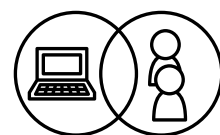
Onsite support



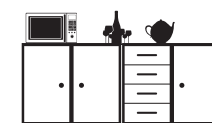
Wireless microphones



High-speed WIFI connection



Full Hybrid event capabilities with Logitech Rally Bar systems



Avant-garde pantry with access to complimentary coffee, tea, beer tap, wine chiller, dishwasher and microwave



AppleTV & Background Music Control



HDMI cable



Podium



Private male & female washrooms

Lounge (Zones A, B & C, including Conference Room and Pantry)

Style	Capacity
Classroom	40-50
Theater	50-60
Standing	80
Roundtable	25

Regular		Members	
Half Day HK\$32,000	Full Day HK\$64,000	Half Day HK\$24,000	Full Day HK\$48,000

Weekends only

Full Day: 9:00 am - 6:00 pm (9 hours)

Half Day: 9:00 am - 1:00 pm /
2:00pm - 6:00 pm (4 hours)

Before / After Operating Hours: Additional \$3,000 per hour

Minimum duration: Half day (4 hours)

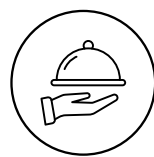


Event Hosting

We welcome groups to organize events & meetings at the Community Hub during weekends.

Contact us for the bespoke package!

Add-on options:



Catering service provided
by external caterers

Terms & Conditions

1. All requests for rental of facilities must be confirmed in writing.
2. In the event of cancellation, the following charges will apply:
 - Cancellation within 7 working days prior to the event – 50% of invoiced amount.
 - Cancellation within 3 working days prior to the event – 100% of invoiced amount.
3. Posters, banners, backdrops, etc. may not be attached to the projection screens, walls, or ceilings.
4. AmCham reserves the right to impose repair or cleaning charges on the client for mishandling of equipment or facilities during the rental period.
5. AmCham reserves the right to change the rental rates without prior notice.
6. In the case when Black Rainstorm Signal or Typhoon Signal No. 8 is hoisted, the event will be allowed to be postponed.



Project Designer: Edge Design Institute Ltd. & Architecture Commons Ltd.
Project Manager: Scott Lau
E&M Consultant: Pinebridge Consulting Ltd.
Technology Consultant: Vega Hong Kong
Contractor: Vivo Contracting Ltd.
Photographer: Kevin Mak @1km Studio